

# PUBLIC NEWS

A man dressed as a leprechaun, wearing a green hat and a bright orange, shaggy beard. He is holding a green pot in front of him and a coin in his right hand, looking directly at the camera with a wide-eyed, excited expression. The background is a dark red brick wall.

# LUCK OF THE IRISH

**SPORTS: BATTLEHAWK FANS SET XFL RECORD**

**PUBLIC NOISE: IRISH BAND FALLING FENCES**

**LETTER RIP: THE PROBLEMS WITH PHOBIAS AND HATE**

**NEWS THEATRE FILM MUSIC DINING ART HUMOR POP CULTURE**

Consumer Cellular®

**EVERY  
THING  
YOU  
NEED.  
NOTHING  
YOU  
DON'T.**



**Switch & Save Up to  
\$250/Year**

On Your Talk, Text and Data Plan!

**CALL CONSUMER CELLULAR**

**833-473-0715**

© 2023 Consumer Cellular Inc. Terms and Conditions subject to change. New service activation on approved credit. Cellular service is not available in all areas and is subject to system limitations. All other products are trademarked by their respective manufacturers. Phones are limited to stock on hand. Savings calculation is based on a comparison of Consumer Cellular's average customer invoice to the average cost of single-line entry-level plans offered by the major U.S. wireless carriers as of May 2022.

# TABLE OF CONTENTS

# MAIL BAG



Dear Readers,

We hit our goal of 10,000 readers three weeks early! Thank you to everyone who has joined us on this ride. Now we have set a new goal of 20,000 readers by the end of June. We can do this!

As you may have noticed this issue of the Public News is a little different and a little lighter page-wise. We are streamlining our little publication to be more appealing and easier to read. We hope you like it.

Some of the changes is in an expanded Calendar of Events broken down by type (Art, Nature, Sports, Live Music, etc) so you can find what you want faster and easier.

We have also streamlined our website to make it more reader friendly.

- Ken Petty

## PUBLIC NEWS

The St. Louis Public News is the only locally owned and operated arts & entertainment newsweekly in St. Louis. We are published every other Wednesday and distributed on our website and through our digital partners.

All content submissions are due the Friday prior to publication.

**We are always looking for good writers. Send us your resume.**

**EDITORIAL CHAIRMAN: KEN PETTY**  
**MANAGING EDITOR: RENE' ROBERTS**  
**MUSIC EDITOR: MARK CRAMPTON**  
**ART DEPT.: ANNA PENA**

**CONTRIBUTING WRITERS:**  
**STEVEN AUGER, JOSH HALL, AUTUMN JONES, MEGAN KETCHERSIDE, ANNA 'PINION' PENA, RENE' ROBERTS, LISA ROHUS, ANDY SINGER, 'UNCLE' ALBERT WINTERS**

**PHOTOGRAPHY & EVERYTHING ELSE**  
**KEN PETTY**

**DISTRIBUTION PARTNERS: ISSUU,**  
**flipHTML.com and PRESS READER**

info@stlpublicnews.com  
**314-665-0221**  
 www.stlpublicnews.com



### PUBLIC NEWS #305

Awesome four-page spread on the BattleHawks. I feel that you kind of dissed them in your season breakdown. You and/or staff picked the BattleHawks to finish 6-4 and second place in the North Division but you never told us how you see them doing in the playoffs. Please fill us in now that we have a couple more games under our belt.

*Fair enough, As we see it, the BattleHawks will play for the North Championship against the D. C. Defenders in Washington and will come away as the victor. However, the Houston Roughnecks will show the Hawks who is the king of the XFL castle.*

*Never fear, the BattleHawks have created a winning legacy. They will be back to the Championship Game again in 2024 if all the pieces remain in place.*

I noticed that you had a "Son of Beatles" theme in your music section with Julian Lennon, Dhani Harrison, and Joey Molland all being featured. What's the latest with James McCartney. He's

dropped off the radar. Have you heard of the Claypool Lennon (Sean) Delirium?

*We are not sure what's going on in the McCartney tribe. The last thing we heard was an interesting duet between Dhani (Harrison) and James McCartney that appeared on 2016's The Blackberry Train.*

*We have heard and liked the pair of Claypool Lennon Delirium studio albums. We would love to see them play in St. Louis. Somewhere safe would be nice. Not downtown (crime issues) nor on Delmar (parking issues), perhaps the Casino?*

You teased a final column from Mark Crampton in your debut issue on Jan. 4th (PN #301). When will we get to read this?

*Good question. It's in the queue and will come out before summertime. We promise.*

Will you ever publish a print version of the Public News?

*We have thought about it and if we did something like that it would have to be published quarterly. Right now, print ad rates are still pretty high. So we will stick with digital for the foreseeable future.*

Who is the better band; The Beatles, The Rolling Stones, or Coldplay?

*We can't believe that you included Coldplay in that shortlist! Come on, man.*

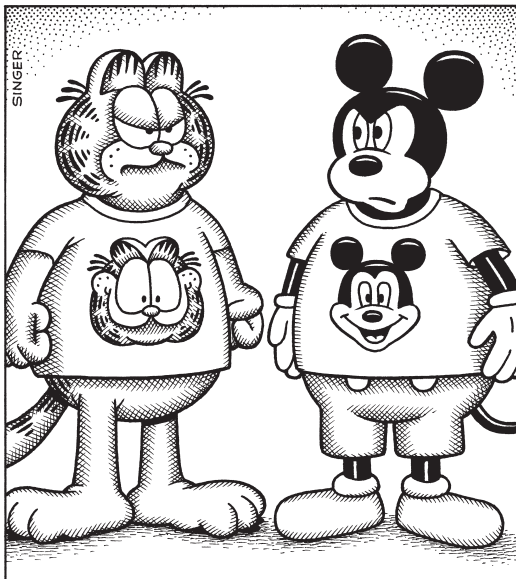
Send your emails to the mailbag mailbag@stlpublicnews.com

- 3 MAILBAG
- 3 ANDY SINGER
- 4 LETTER RIP
- 5 BEST BET
- 6 CALENDAR / EVENTS
- 9 COVER
- 11 SPORTS
- 12 PUBLIC NOISE
- 13 MUSIC
- 14 FILM
- 15 UNCLE ALBERT
- 15 COFFEE WITH JESUS
- 15 CLASSIFIED ADS

stlpublicnews.com

NO EXIT

© Andy Singer



New Issue Every Other Week!

FREE



THE BUZZ

A ST. LOUIS PUBLIC NEWS PUBLICATION

"News To Be Enjoyed Over Your Favorite Beverage!"

www.thebuzzison.com

SOUTH COUNTY EDITION

314-665-0221



# LETTER RIP

## The Problems With Phobias & Hate

Growing up I used to have nyctophobia (fear of the dark) especially when driving on wet roads. I also used to have a fear of heights (acrophobia) especially when I was up on a ladder high from the ground.

I am sure I had other fears or phobias growing up. Fear of death (thanatophobia), the fear of dogs (cynophobia) and the fear of failure (atychiphobia). The fear of public speaking (glossophobia) was never one of them.

However I have to admit that I do not understand some of the phobias (fears) that have been invented that are used to indicate a hate of something in order to shame a person for hating or disliking it.

Let's list a few of them and understand that there will be people who will find offence and try to cancel us because they have alethophobia, a fear of the truth.

Homophobia. Fear of gay people? I never understood how that makes any



sense.

However, when taken literally, homophobia may be a problematic term. Professor David A. F. Haaga says that

contemporary usage includes "a wide range of negative emotions, attitudes and behaviours toward homosexual people," which are characteristics that

are not consistent with accepted definitions of phobias, that of "an intense, illogical, or abnormal fear of a specified thing." Five key differences are listed as distinguishing homophobia, as often used, from a true phobia.

This fabricated definition can also be applied to fatphobia, islamaphobia, transphobia, county-musicphobia... and the list goes on.

A person has a right to like what they like and not like what they don't like. It's called preferences.

Using made up psychological terms to try and shame a person on their preferences or likes/dislikes is idiotic and makes no sense.

Instead, let's use the art of persuasion. If you want to change a person's thinking about something, persuasion is a better choice than hurling insults wrapped up as psychological terminology.

Let's do better.

**Smart security. Professionally installed.**

Protection starts with prevention



Know When People and Packages Arrive



Peace of Mind Starts Here



Get FREE Professional Installation and Four FREE Months of Monitoring Service\*

**One Connected System For Total Peace of Mind**



**Get FREE Professional Installation and Four FREE Months of Monitoring Service\*** Use Promo Code 4FREE

CALL NOW TO CUSTOMIZE YOUR SYSTEM

**833-326-0669**



\*Qualifying system purchase requires minimum \$599.99 equipment purchase, professional installation and applicable services agreement. DIY system purchases and reactivations of previously installed systems not eligible for offer. Offer not available in all states or provinces. Equipment purchase may be financed separately subject to an agreement with one of Vivint's third-party financing partners. Monthly \$1.48 cellular network maintenance fee applies. Taxes and local permit fees may apply. New Vivint Customers only. Financing eligibility and terms subject to credit approval by one of Vivint's third-party financing partners. Qualified customers may finance equipment purchase at 0% APR for up to 60 months. Month-to-month service agreement available when equipment is purchased upfront. System supports up to six cameras subject to sufficient Wi-Fi speeds. Without a Vivint services plan, product and system functionality is limited (including loss of remote connectivity). Speak to a Vivint representative at the phone number in this offer for complete equipment, services, and package details, including pricing and financing details. Products and services in Louisiana provided by Vivint Louisiana Commercial Certificate #58280. See comprehensive Vivint license numbers on Vivint.com.



Member F.B.C. Since 1993

**(636) 529-1146**

For Service or Quote

sales@mlsitrades.com

Licensed \* Insured \* Bonded



Electric City Crew.com









Mobile Lighting Source





Waterproof Lights



Specialty



Sign Reaction







LED Display



PAINT City Crew









1710 Fenpark Dr. / Fenton, MO. 63026

# BEST BET



## BattleHawks v Defenders A Heated Rivalry Established

You can expect a packed Dome for the second of two matches between North Division rivals D. C. Defenders (4-0) and the St. Louis BattleHawks (3-1).

The D. C. Defenders are undefeated but have not had much competition until they faced the St. Louis BattleHawks two weeks ago. The Defender's schedule, so far, afforded them two matches against the hapless Vegas Vipers, another North Division rival that St. Louis will meet up with twice later this season.

So, the Defenders really have not been challenged hard in a hostile road environment. Not saying that the Dome in St. Louis is hostile, but D. C. never had to deal with the amount of noise they are about to experience when they play the Hawks.

Only two stadiums in the XFL are indoors; St. Louis' and San Antonio's. The D. C. Defenders will play in the Alamodome to close out the 2023 XFL regular season.

Leading the BattleHawks is quarterback A.J. McCarron who set season highs with 26 completions, 262 passing yards, and 4 touchdowns in Week 3 at D.C.

McCarron ranks second in the XFL with 9 touchdown passes and 3rd with 850 passing yards. He rushed for a team-high 41 yards with one rushing touchdown in Week 2 at Seattle and is tied for second among XFL quarterbacks with 3 rushes of 10+ yards for the season.

Hometown favorite Brian Hill set season highs in Week 4 against Arlington with 115 all-purpose yards and 89 rushing yards the most by a BattleHawks rusher this season. Hill scored his first touchdown of the year on an 8-yard reception in Week 3 at D.C. Hill also had a 40-yard run in the fourth quarter of Week 1 at San Antonio is the longest run by any St. Louis player this season.

The BattleHawks also feature wide receiver Austin Proehl, the son of St. Louis Rams great Ricky Proehl.

Austin ranks third on the club with 14 receptions and 124 receiving yards for the season. He led the team with four catches for 49 yards in Week 1 at San Antonio. Proehl also caught the game-winning touchdown, a 14-yard reception with 16 seconds left in the Week 1 win at San Antonio.

## Prepare for power outages today

WITH A HOME STANDBY GENERATOR

**\$0 MONEY DOWN + LOW MONTHLY PAYMENT OPTIONS**

Contact a Generac dealer for full terms and conditions

**REQUEST A FREE QUOTE**

**CALL NOW BEFORE THE NEXT POWER OUTAGE  
(855) 402-1379**

**FREE**  
7-Year Extended Warranty\* – A \$695 Value!

\*To qualify, consumers must request a quote, purchase, install and activate the generator with a participating dealer. Call for a full list of terms and conditions.

**GENERAC®**



## FREE INTERNET

Qualify today for the Government Free Internet Program

**YOU QUALIFY for Free Internet if you receive Medicaid, SNAP, Housing Assistance, WIC, Veterans Pension, Survivor Benefits, Lifeline and Tribal.**



**Bonus offer:  
4G Android Tablet with one time co-pay of \$20**

**CALL TODAY (877) 580-0462**

**maxsip**  
CONNECTS

ACP program details can be found at [www.fcc.gov/affordable-connectivity-program-consumer-faq](http://www.fcc.gov/affordable-connectivity-program-consumer-faq)

# CALENDAR OF EVENTS



## WICKED TO RETURN TO ST. LOUIS AT THE FABULOUS FOX THEATRE APRIL 12 – MAY 7 TICKETS ON SALE NOW

(St. Louis, MO) – WICKED, St. Louis’s most popular musical, will return to St. Louis at the Fabulous Fox Theatre April 12 – May 7. Tickets for the return engagement are on sale now by calling MetroTix at 314-534-1111 or visiting MetroTix.com.

Ticket prices start at \$55. Prices are subject to change; please refer to FabulousFox.com for current pricing. WICKED is part of the U.S. Bank Broadway Series and presented by Fox Performing Arts Charitable Foundation.

Performances of WICKED at the Fabulous Fox run April 12 – May 7. Show times are Tuesday through Saturday evenings at 7:30 p.m., Saturday afternoons at 2 p.m., Sunday afternoons at 1 p.m. and Sunday evenings at 6:30 p.m. There will also be a matinee performance on Thursday, April 13 at 1:00 p.m.

The Broadway sensation WICKED looks at what happened in the Land of Oz...but from a different angle. Long before Dorothy arrives, there is another young woman, born with emerald-green skin, who is smart, fiery, misunderstood, and possessing an extraordinary talent. When she meets a bubbly blonde who is exceptionally popular, their initial rivalry turns into the unlikely of friendships...until the world decides to call one “good,” and the other

one “wicked.”

With a thrilling score that includes the hits “Defying Gravity,” “Popular” and “For Good,” WICKED has been hailed by The New York Times as “the defining musical of the decade,” and by Time Magazine as “a magical Broadway musical with brains, heart, and courage.” NBC Nightly News calls the hit musical “the most successful Broadway show ever.”

Now the 5th longest-running show in Broadway history, WICKED is the winner of over 100 international awards including the Grammy Award® and three Tony Awards®. Since opening in 2003, WICKED has been performed in over 100 cities in 16 countries around the world (U.S., Canada, United Kingdom, Ireland, Japan, Germany, Holland, Australia, New Zealand, Singapore, South Korea, The Philippines, Mexico, Brazil, Switzerland and China) and has thus far been translated into six languages: Japanese, German, Dutch, Spanish, Korean and Portuguese. WICKED has been seen by over 60 million people worldwide and has amassed over \$5 billion in global sales.

Based on the novel by Gregory Maguire, WICKED has music and lyrics by Stephen Schwartz, and a book by Winnie Holzman. The production is directed by Tony Award winner Joe Mantello with musical staging by Tony Award winner Wayne Cilento. WICKED is produced by Marc Platt, Universal Stage Productions, The Araca Group, Jon B.

Platt and David Stone.

**Jacolby Satterwhite: Spirits Roaming on the Earth**  
Now thru Aug. 13, 10:00 am to 5:00 pm  
Contemporary Art Museum  
St. Louis  
3750 Washington Boulevard  
St. Louis, MO 63108  
(314) 535-4660

Spirits Roaming on the Earth maps conceptual artist Jacolby

Satterwhite’s extraordinary creative trajectory across multiple materials, genres and modes of thinking.

Drawing on a broad set of real and fantastical references and diverse influences, including video gaming, art history, mythology and contemporary visual culture, Satterwhite creates digital worlds of resilience, reinvention and celebration. His intricately detailed animations and live action films of real and imagined worlds – populated by the avatars of Satterwhite and his friends – serve as the stage for the artist’s surreal and poetic world-building.

At the Contemporary Art Museum St. Louis, the exhibition will cover all the downstairs galleries as well as the 60-foot Project Wall to fully immerse visitors in the show. There will also be an outdoor video projection playing from dusk until midnight every day.

**Sara Ghazi Asadollahi**  
Now thru Apr. 22, 10am to 5pm  
Bruno David Gallery  
7513 Forsyth Boulevard  
St. Louis, MO 63105  
(314) 696-2377

The video work “Chaos” by Iranian-born, Atlanta-based multi-disciplinary artist Sara Ghazi Asadollahi is a visual interpretation of the timeless and deeply emotional poem by the Iranian poet, Furūgh Farrukhzād: “To my abode, if thou should come,

bring a light, O gentle one, and a case-ment, from which I might view the bustle of the street below.” It is a tribute to Farrukhzād’s artistry and a meditation on the universal human experiences of love, loss, and the passage of time.

**CONTINUING**  
Invitational Exhibition FREE  
Now thru March 31,  
12:00 pm to 4:00 pm  
McNamee Gallery in Cupples House  
3673 W Pine Blvd.  
St. Louis, MO 63103  
(314) 977-2998

The Studio Art faculty at Saint Louis University have invited artists to show drawing, sculpture, fibers, costume design, ceramics, jewelry, painting, and photography at McNamee Gallery, the curricular exhibition space of the Studio Art program. This annual exhibit will open with a reception on February 17th from 4:30pm to 6pm in the gallery. Light refreshments will be served, and the reception is free and open to the public.

The exhibit reflects the varied artistic media studied by Saint Louis University students, who are encouraged to attend the reception for the opportunity to meet the artists and engage with them in conversation about their work. The exhibiting artists are Louis Bird, Jim Daniels, Patrice Hill, creator of Inali Jewelry Designs, Nathan Key, Sarah Knight, Emily Mueller, Lindsay Pichaske, John Sarra, Sean Semones, Sam Watkins, and Kim Wilson.

McNamee gallery is in the lower level of the historic Cupples House on the Saint Louis University campus, accessible directly from West Pine Mall with stairs, or through Cupples House with an elevator, and is open weekday afternoons. Visitors should contact the gallery coordinator, Rick Dunn for specific opening hours. The exhibit runs until March 31st.

Featured photo by Sarah Knight.

**Presence As Obect FREE**  
Mar. 2 - 10, 10:00 am to 5:00 pm  
Cecille R. Hunt Gallery at Webster University  
8342 Big Bend Blvd.  
St. Louis, MO 63119

The seemingly endless possibilities of abstract painting continue to have resonance and relevance to comment on current political climates and contem-

porary aesthetic discourse. The works in the Presence as Object exhibition focus on approaches to abstraction as a vehicle to explore the construction of painting, as well as its presence as object, and its ability to illuminate the atmospheres and sensations linked to our understanding of the constructed versus natural environments. Artists include: Maryville, Missouri based-German artist Armin Mühsam; Los Angeles-based Kelley Johnson; Kevin Umama Kansas City, Missouri artist; and Shawn Powell from Cleveland, Ohio.

**Would You Love Me As A Pet?  
a juried art exhibit FREE  
Now thru Mar. 24, 4 pm to 8 pm  
Soulard Art Gallery  
2028 S. 12th Street  
St. Louis, MO 63104  
(314) 258-4299**

Would You Love Me As A Pet? – a juried art exhibit. Companion animals fill our lives with friendship and devotion, while animals in the wild inspire us with their natural beauty. See how local artists portray their love for animals. The exhibit is free and open to the public and will be on display thru March 24. Visit the [www.soulardartgallery.com](http://www.soulardartgallery.com) for additional details and hours.

Throughout the exhibit the gallery will be accepting monetary and supplies for the Stray Rescue animal shelter. For a list of their wishlist for supplies or to donate online please visit their website <https://www.strayrescue.org/> or bring your monetary donation by to the gallery.

The Soulard Art Gallery is a co-op art gallery located in Historic Soulard. With artwork by 13 resident artists, we offer a diverse collection of works, including painting, drawing, sculpture, photography, and jewelry. We also host a local artists group exhibition in our main gallery every month for artists to submit their work for display.

Gallery hours are Thursdays 4-8pm, Fridays and Saturdays 12-8pm and Sundays 1-5pm

**Greater Than the Sum of its Parts Art Exhibit  
Mar. 8 - Apr. 29, 8:00 am TO 5:00 pm  
Green Door Art Gallery  
21 N. Gore Ave.  
Webster Groves, MO 63119  
(314) 202-4071**

Greater Than the Sum of its Parts,

Amazing Art from Pieces and Pixels, features Pysanky by Katherine Alexander, Digital Art by Matt Bryan, Mosaics by Brenda Fra-ser, Assemblage by Nell Kobes, and Mosaics by Virgene Tyrell. The artwork will be on display and available for sale March 8 – April 29, 2023.

Green Door Art Gallery's 36 resident artists will also be exhibiting and selling artwork.

**Jimmy Fike: Edible Botanicals – A Photographic Survey of the Wild Edible Botanicals of North America  
Thru Apr. 28, 5:30 pm TO 7:30 pm  
Webster University's Kooyumjian Gallery  
Sverdrup Building: Second Floor,  
West Wing, 8300 Big Bend  
Webster Groves, MO 63119  
(314) 246-7673**

Jimmy Fike's wonder-filled photographic archive exquisitely depicts North America's rich trove of wild edible flora. The botanicals transcend scientific illustration– they seem to awaken trying to communicate with the viewer. The plants illustrate a cycle of death and rebirth, psychopomps, guiding viewers through a process of psychological transformation. Mr. Fike's photography directs viewers to free food that can be used for sustenance. Recognizing plants anew outside the gallery and eating the plants is living art, a dynamic extension to his photographic project.

**Breathe: A Solo Exhibition by Artist Lauren Younge FREE  
Now thru Mar. 15, 9 am to 9 pm  
COCA – Center of Creative Arts  
6880 Washington Ave.  
St. Louis, MO 63130**

Breathe is a collection of large-scale abstract paintings created through the unconscious combination of bold colors and free movement. Artist Lauren Younge uses acrylics to design irregular patterns that could motivate unexpected associations and memories in her audience. To do that, the exhibition encourages viewers to take a moment of breathing to reflect on the works of art and their own lives; to find a moment or memory that makes them feel joy; to decide what they see and what seems to them, in the pieces, beautiful and comforting. In a present of overworking, high stress and anxiety levels, Younge believes art witnessing can encourage a

pause. Because of this, Breathe includes an interactive experience of journaling, where visitors share an intimate moment of gratitude and rest.

Lauren Younge is drawn to the unrestricted expression of abstraction. She sees art as an outlet for relieving stress and translating difficult thoughts and emotions. As an artist, she creates in the moment by using as materials the spirit and energy of her authentic emotional life. The result is an unintentional body of work, created almost by accident. Because her intentions are never set in stone, people's perception of her work is not either.

Millstone Gallery is open during COCA's regularly scheduled business hours.

**Samson Young: Sonata for Smoke  
FREE  
Now thru Apr.9, 10 am to 9 pm  
Saint Louis Art Museum  
1 Fine Arts Dr  
St. Louis, MO 63110  
(314) 721-0072**

Hong Kong-based artist Samson Young's practice centers on installation-based work stemming from sound and music. He interweaves cultural paradigms across media while focusing on poetic translations between the sonic and the visual.

The 2021 video Sonata for Smoke is a meditation on the symbolic and impermanent nature

**Invitational Exhibition FREE  
Thru Mar. 31, 12:00 pm to 4:00 pm  
McNamee Gallery in Cupples House  
3673 W Pine Blvd.  
St. Louis, MO 63103  
(314) 977-2998**

The Studio Art faculty at Saint Louis University have invited artists to show drawing, sculpture, fibers, costume design, ceramics, jewelry, painting, and photography at McNamee Gallery, the curricular exhibition space of the Studio Art program. This annual exhibit will open with a reception on February 17th from 4:30pm to 6pm in the gallery. Light refreshments will be served, and the reception is free and open to the public.

The exhibit reflects the varied artistic media studied by Saint Louis University students, who are encouraged to attend the reception for the opportunity to

meet the artists and engage with them in conversation about their work. The exhibiting artists are Louis Bird, Jim Daniels, Patrice Hill, creator of Inali Jewelry Designs, Nathan Keay, Sarah Knight, Emily Mueller, Lindsay Pichaske, John Sarra, Sean Semones, Sam Watkins, and Kim Wilson.

McNamee gallery is in the lower level of the historic Cupples House on the Saint Louis University campus, accessible directly from West Pine Mall with stairs, or through Cupples House with an elevator, and is open weekday afternoons. Visitors should contact the gallery coordinator, Rick Dunn for specific opening hours. The exhibit runs until March 31st.

**Narcissus Garden  
Laumeier Sculpture Park FREE  
Now thru May 14,  
12:00 pm TO 7:00 pm  
Laumeier Sculpture Park  
12580 Rott Road  
Saint Louis, MO 63127  
(314) 615-5278**

From Feb. 11 to May 14, the Aronson Fine Arts Center at Laumeier Sculpture Park will exhibit Yayoi Kusama's Narcissus Garden.

Narcissus Garden is an immersive installation consisting of almost 1,000 spheres with highly polished, reflective mirrored surfaces. As the title suggests, Narcissus Garden presents itself as a human-made garden, acknowledging and embracing the inherent narcissism in the viewer's desire to see themselves reflected within it.

The installation will fill the Whitaker Foundation Gallery, turning the space into an engrossing experience of shape, light and reflections that will present moments of movement and stillness. The shape of the spheres is also indicative of the sun and moon, and when activated, their surface represents the union of man and nature.

First presented in 1966, Narcissus Garden has been reconfigured anew in recent years. With a multiplicity of meaning and interpretation, this monumental sculptural installation refers back to the fundamental trio of the art object, the natural landscape and the viewer.

This noteworthy and historically important work is a prime example of Kusama's signature motifs of repetition and mirroring to create a sense of



(888) 920-4264

Caring.com's trusted Family Advisors help match seniors with the right senior living solution for their needs.



In your free consultation, our experts provide:

- Pricing estimates
- Helpful advice
- Support for senior and caregivers

Take the guesswork out of senior care, call a Caring Family Advisor today.

Call today! (888) 920-4264

## DENTAL Insurance

It doesn't matter what dentist you see, we can help pay the bill. Get **dental insurance** from Physicians Mutual Insurance Company.

Get your **FREE** Information Kit



Call now!

1-855-451-1281

Dental50Plus.com/StLouis

Product not available in all states. Contact us to see the coverage and offer available in your state. Contact us for complete details about this insurance solicitation including costs and limitations. This specific offer is not available in CO. Call 1-800-969-4781 or respond for a similar offer. In WV: To find a provider in the network visit us at <https://www.physiciansmutual.com/web/dental/find-dentist>. Certificate C250A (ID: C250E); Insurance Policy P150; Rider Kinds B438/B439. In CA, CO, ID, KY, ME, MD, MA, MI, MO, NV, NJ, NC, ND, VA: Includes Participating Providers and Preventive Benefits Rider. Certificate C254/B465 (PA: C254PA); Insurance Policy P154/B469 (GA: P154GA; OK: P154OK; TN: P154TN).

6323

infinite space.

The exhibition is free and open to the public, but reservations are recommended.

**Would You Love Me As A Pet? a juried art exhibit FREE**  
Now thru Mar. 24, 4 pm to 8 pm  
**Soulard Art Gallery**  
2028 S. 12th Street  
St. Louis, MO 63104  
(314) 258-4299

Would You Love Me As A Pet? – a juried art exhibit. Companion animals fill our lives with friendship and devotion, while animals in the wild inspire us with their natural beauty. See how local artists portray their love for animals. The exhibit is free and open to the public and will be on display thru March 24. Visit the [www.soulardartgallery.com](http://www.soulardartgallery.com) for additional details and hours.

Throughout the exhibit the gallery will be accepting monetary and supplies for the Stray Rescue animal shelter. For a list of their wishlist for supplies or to donate online please visit their website <https://www.strayrescue.org/> or bring your monetary donation by to the gallery.

The Soulard Art Gallery is a co-op art gallery located in Historic Soulard. With artwork by 13 resident artists, we offer a diverse collection of works, including painting, drawing, sculpture, photography, and jewelry. We also host a local artists group exhibition in our main gallery every month for artists to submit their work for display.

Gallery hours are Thursdays 4-8pm, Fridays and Saturdays 12-8pm and Sundays 1-5pm

**Greater Than the Sum of its Parts Art Exhibit**

Thru Apr. 29, 8 am to 5 pm  
**Green Door Art Gallery**  
21 N. Gore Ave.  
Webster Groves, MO 63119  
(314) 202-4071

Greater Than the Sum of its Parts, Amazing Art from Pieces and Pixels, features Pysanky by Katherine Alexander, Digital Art by Matt Bryan, Mosaics by Brenda Fra-ser, Assemblage by Nell Kobes, and Mosaics by Virgene Tyrell. The artwork will be on display and available for sale March 8 – April 29, 2023.

Green Door Art Gallery's 36 resident artists will also be exhibiting and selling artwork.

**Fabricating Empire: Folk Textiles and the Making of Early 20th-Century Austrian Design FREE**  
Thru May 28, 10 am to 5 pm  
**Saint Louis Art Museum**  
1 Fine Arts Dr  
St. Louis, MO 63110  
(314) 721-0072

Fabricating Empire examines the relationship between the development of Central European folk costume and Austrian modern design, especially the textile department of the Wiener Werkstätte, or Vienna Workshops.

Taking a sociopolitical look at this rich story of design, the exhibition highlights the importance of visual traditions within Central Europe on the development and success of modern textile design in Austria and the impact of imperial Austro-Hungarian initiatives supporting the applied arts.

The exhibition considers new scholarship that suggests the imperial government was at the center of promoting and appropriating folk art across the empire as it attempted to create an all-embracing identity for its diverse subjects and fragmented territories. Exploring issues of appropriation, nationalism and colonization, Fabricating Empire presents a nuanced view of an enterprise that influenced generations of designers, from Paul Poiret and Josef Frank to Ettore Sottsass.

The exhibition will feature several recent acquisitions, including four never-exhibited printed textiles, as well as loans of primarily early 20th-century folk dress and a 1913 portfolio of modern pattern designs from the St. Louis Public Library's Steedman Architectural Collection.

**Thursday Night Trivia at City Foundry FREE**

Every Thursday, 7:00 pm TO 9:00 pm  
**City Foundry**  
3700 Forest Park Ave.  
St. Louis, MO 63108

Quest Trivia runs trivia nights at City Foundry every Thursday from 7 to 9 p.m.

Meet under the Sand Tower, think of a team name and warm up your brain because the competition is fierce!

Prizes kindly donated by 4 Hands Brewing Co.



# LUCK OF THE IRISH

## 40 tips on how to be more irish

Are you fed up chasing the elusive Irish spirit? Are you never entirely sure about how to be Irish? Do you wish you could just nail down *exactly* what is and isn't Irish. Is there something far more concrete than just "You know yourself" or "Sure have a pint and ponder it"?

After 12,500 years of ambiguity, the St. Louis Public News has the solution, with a little help from a leprechaun.

Here is our list of accessible nuggets of insight! Or, if you think you already have the whole Irish thing down, discover whether you are in fact 100% true clover. Because if you do need a little help, all you need to do is follow some straightforward steps. These easy tidbits of guidance (green white and) gold will see you right.

To the devil with endless green clouds of vagueness!

Finally, a comprehensive body of work that defines what it is to be descended from the fair Erin's Isle. One that uses the unparalleled power of Irish humor to unravel the truth. How else to crack through that hardened Irish casing? Wit is what makes the Irish who they are.

Your Irish identity master class starts (and ends) here!! No enrollment, no homework, just distilled essence of what it takes to be true green – served up in stupendously digestible portions.

#1) Don't you find it odd that, with a population of 6 million, Ireland boasts the same number of Nobel Laureates in Literature as China, India and Nigeria combined?

#2) Thank the Bus or Designated Driver

#3) Be sure Olé, Olé, Olé is an Irish chant.

#4) Feel genuine envy when you hear

of the drastic increases in temperature global warming is causing elsewhere

#5) Scrap all punctuation in favor of the word 'like'

#6) Harbor a genuine mistrust of authority.

If you are the authority, Harbor a genuine mistrust of self.

#7) Backslap, hug, slobber and sweat on your drinking buddies, but never touch the pint of another.

#8) Sing heart-wrenching laments about your dream of soaring over the green hills of fair Erin's Isle, but fail to book the flight.

#9) Start going to mass so you can use Catholic repression to justify your drinking

#10) Know The Flight of the Earls is not a band name\*

#11) Convince yourself it was like that when you got there.

#12) Be almost certain by June that spring is in the air

#13) Choose only partners who accept that Spud will always come first

#14) Know that speaking even the most disgraceful English in this life could never undo the thousands of lifetimes when Gaelic graced your tongue

#15) Laugh to hide the pain, Smile at how well you do it.

#16) When your therapist gets too inquisitive, Tell them you don't want to go into it. And to pull you another pint.

#17) Come equipped with a mouth that

has 2 settings: Long-Winded or Tight-Lipped

#18) Greet horses semi-formally

#19) Once it hits 60° F, commence to sweat.

#20) Allow others to assume you've read Joyce

#21) Worry about the gene pool

#22) Instantly think Supply & Demand when you hear someone has 'an alcohol problem'

#23) Repress as much as possible. Find new ways to not cope with your emotions. It is what gives life its tension.

#24) Know that fiction is a far more popular genre than non-fiction. Adapting speech accordingly.

#25) Compliment is a prelude to an insult.

#26) Pitch the Irish way as the Great Leap Forward (Covering your tracks)

#27) After a long day of complaining, caviling and criticizing, Sit back and 'unwhine'.

#28) You refer Wild Geese to Battery Chickens?

#29) You notice your family tree grows in a circle?

#30) You struggle with non-Irish accents, and find most other Irish accents incomprehensible?

#31) Repress your emotions, especially when dealing with conflict. Say "Sure, it's grand" (x 5, at least) and "Don't worry

about it" (x 3). Then proceed to never see that person again.

#32) Feel drinking games are only for the seriously unmotivated.

#33) Caught red handed? Laugh about your actions. With a bit of luck, the person will understand it's a joke they didn't know they should get.

#34) Feel your cerebral quirkiness validated, now that humanity is urged to 'Think Green'.

#35) Recognize a true Irish Buzz

#36) Hope you get into heaven. And that Roy Keane is the bouncer.

#37) After stating you're Irish, leave a pause. In case they want to clap.

#38) Flip the script for what you love. Respond to anti-spud cruelty by making potato skins a meal.

#39) See your people as a joyous form of cancer, always popping up where most expected, constantly spreading.

#40) Accept that the Gods may sometimes test your will and dedication to your craft, sending plagues, disasters & superviruses around St. Patrick's Day. But if even your sponsor can't get you to sit out that drinking session.

... and a bonus tip..

#41) Find it natural that the patron saint is a (snake) charmer.

Always remember "How To Be Irish", because everyone could do with being a little more Irish.

Thanks to the ANTBlog for some of these tips.



SAME GREAT TV EXPERIENCE. NEW 2-YEAR PRICE GUARANTEE.



Lock in your price today and get 165+ channels and over 45,000 on demand titles

Download your DVR recordings to your devices at home and watch offline anywhere

Store over 200 hours of HD recordings

CHOICE™ PACKAGE

\$84<sup>99\*</sup> MO. for 24 months + taxes and fees

w/ 24 mo. agmt. AutoPay and Paperless Bill req'd. Advanced Receiver Service Fee \$15/mo. and Regional Sports Fee up to \$13.99/mo. are extra & apply.

Contact your local DIRECTV dealer!

1-866-808-7794



Available only in the U.S. (excludes Puerto Rico and U.S.V.I.) Pricing: CHOICE \$84.99/mo. for two years. After 2 years, then month to month at then current prevailing prices unless cancelled. Additional Fees & Taxes: Price excludes Advanced Receiver Service Fee of \$15/mo. (which is extra and applies to all packages) and Regional Sports Fee of up to \$13.99/mo. (which is extra & applies to CHOICE and/or MÁS ULTRA and higher Pkgs.), applicable use tax expense surcharge on retail value of installation, custom installation charges, equipment upgrades/add-ons, and certain other add'l fees & chrgs. See directv.com/directv-fees/ for additional information. Different offers may apply for eligible multi-dwelling unit. \$10/MO. AUTOPAY AND PAPERLESS BILL DISCOUNT: Must enroll in autopay & paperless bill within 30 days of TV activation to receive bill credit starting in 1-3 bill cycles (pay \$10 more/mo. until discount begins). Must maintain autopay/paperless bill and valid email address to continue credits. DIRECTV SVCS TERMS: Subject to Equipment Lease & Customer Agreements. All offers, packages, programming, promotions, features, terms, restrictions and conditions and all prices and fees not included in price guarantee are subject to change without notice. Package, Advanced Receiver Service Fee, Regional Sports Fee (varies by zip code) and equipment fees for TV connections are included in two-year price guarantee. Taxes, surcharges, add-on programming (including premium channels), protection plan, transactional fees, and Federal Cost Recovery Fee are not included in two-year price guarantee. Some offers may not be available through all channels and in select areas. Different offers may apply for eligible multi-dwelling unit. Visit directv.com/legal/ or call for details. Access HBO Max through HBO Max app or hbo.com with your DIRECTV log-in credentials. Visit directv.com to verify/create your account. Use of HBO Max is subject to its own terms and conditions, see hbo.com/terms-of-use for details. Programming and content subj. to change. Requires account to stay in good standing. Upon cancellation of your video service you may lose access to HBO Max. If you cancel your service, you will no longer be eligible for this offer. Limits: Access to one HBO Max account per DIRECTV account holder. May not be stackable w/other offers, credits or discounts. To learn more, visit directv.com/hbomax. HBO MAX is used under license. Cinemax and related channels and service marks are the property of Home Box Office, Inc. Separate SHOWTIME subscription required. SHOWTIME is a registered trademark of Showtime Networks Inc., a Paramount Company. All rights reserved. Starz and related channels and service marks are the property of Starz Entertainment, LLC. Visit starz.com for airdates/times. MGM+ is a registered trademark of MGM+ Entertainment LLC. ©2023 DIRECTV. DIRECTV and all other DIRECTV marks are trademarks of DIRECTV, LLC. All other marks are the property of their respective owners.

# SPORTS



## SOLD OUT CROWD OF 38,310 WITNESS BATTLEHAWKS WIN OVER ARLINGTON 24-11, REMATCH WITH D. C. NEXT

by Brian Stull

An XFL record-setting 38,310 fans welcomed the Battlehawks to The Dome at America's Center for their first home game of the season, and St. Louis rolled to a 24-11 victory over the Arlington Renegades to improve to 3-1 on the season.

The Battlehawks broke a 3-3 tie with 11 seconds left in the first half when quarterback A.J. McCarron found wide receiver Darrius Shepherd for a 27-yard touchdown. McCarron next connected with running back Brian Hill for a 5-yard pass to complete a two-point conversion and give St. Louis an 11-3 lead at halftime. Hill extended St. Louis' lead to 17-3 with 6:58 left in the third quarter when he scampered 15 yards for his first rushing touchdown of the season.

Arlington closed the margin to 17-11 with 12:40 left in the fourth quarter, but the Battlehawks offense responded with a six-play, 67-yard drive that ended on a 27-yard pass from McCarron to wide receiver Hakeem Butler. McCarron also hit tight end Jake Suther-

land for a 1-yard pass to complete a one-point conversion. The St. Louis defense then maintained the 13-point advantage for the final 9:55 of the fourth quarter.

An XFL-record 38,310 fans showed up Sunday at The Dome at America's Center to watch the Battlehawks beat the Arlington Renegades, 24-11. The previous mark was 29,554 which was set by St. Louis in the 2020 home opener. The 300 level will again be open for Saturday's game at 6 p.m. vs. the D.C. Defenders. Fans can purchase tickets at [xfl.com/tickets](http://xfl.com/tickets).

*Photos courtesy of the XFL*



## Prepare for power outages today

**GENERAC**

WITH A HOME STANDBY GENERATOR

**\$0 MONEY DOWN + LOW MONTHLY PAYMENT OPTIONS**

Contact a Generac dealer for full terms and conditions

**REQUEST A FREE QUOTE**

CALL NOW BEFORE THE NEXT POWER OUTAGE  
**(855) 402-1379**

**FREE**  
7-Year Extended Warranty\* – A \$695 Value!

\*To qualify, consumers must request a quote, purchase, install and activate the generator with a participating dealer. Call for a full list of terms and conditions.



2023 SEASON SCHEDULE



**WEEK 4**  
SUNDAY, MARCH 12  
HOME



3:00PM | CT | **ESPN 2**

**WEEK 5**  
SATURDAY, MARCH 18  
HOME



6:00PM | CT | **FX**

**WEEK 6**  
SATURDAY, MARCH 25  
AWAY



6:00PM | CT | **FX**

**WEEK 7**  
SATURDAY, APRIL 1  
AWAY



2:00PM | CT | **ESPN 2**

**WEEK 8**  
SATURDAY, APRIL 8  
HOME



12:00PM | CT | **ESPN**

**WEEK 9**  
SUNDAY, APRIL 16  
HOME



2:00PM | CT | **ESPN**

**WEEK 10**  
SATURDAY, APRIL 22  
HOME



11:00AM | CT | **ESPN**

# PUBLIC NOISE

**1860's Saloon & Hardshell Café**  
1860 S. Ninth, 314-231-1860  
soularddining.com  
*Open Mic Night Every Tuesday in the 1860 Saloon*

**2720 Cherokee**  
2720 Cherokee, 314-276-2700  
2720cherokee.com

**Ameristar Casino's Bottleneck Blues Bar**  
1 Ameristar, 636-940-4966  
ameristar.com  
*3/24 Great White & Slaughter*  
*3/31 & 4/1 A Night of Queen*  
*4/28 Grits & Glamour*  
*5/6 Evil Woman - The American ELO*  
*5/19 Rumours - A Fleetwood Mac Tribute*  
*6/2 Morris Day: Last Call*

**Atomic Cowboy/The Fox Hole**  
4140 Manchester, 314-775-0775  
atomiccowboystl.com

**BB's Jazz, Blues and Soups**  
700 S. Broadway, 314-436-5222,  
bbsjazzbluessoups.com

**Baha Rock Club**  
305 N. Main, St. Charles,  
636-949-0466  
baharockclub.biz

**Beale on Broadway**  
701 S. Broadway, 314-621-7880,  
bealeonbroadway.com

**Blanche M. Touhill Performing Arts Center**  
1 University, University of Missouri-St. Louis, 314-516-4949  
touhill.org

**Blueberry Hill's Duck Room**  
6504 Delmar, 314-727-4444,  
blueberryhill.com/events/duck

**Broadway Oyster Bar**  
736 S. Broadway, 314-621-8811  
broadwayoysterbar.com

**Casa Loma Ballroom**  
3354 Iowa, 314-664-8000,  
casalomaballroom.com

**Cathedral Basilica of St. Louis**



## LOCAL BAND NEWS

The weekend of St. Patrick's Day will have McGurk's Irish Pub buzzing with the musical activity of Falling Fences.

Singer and songwriter, Joe Stickle, met lead guitarist Sean Canan while both were students at the University of Missouri-Columbia back in 1999. Along with keyboardist Andrew Weir

and producer Wil Reeves, they've been making music together pretty much ever since then. Under the name Joe Stickle's Blue Print, the band released three albums and toured widely in the U.S. before slowing things down about ten years ago.

That's when Stickle and Canan picked up a weekly gig at McGurk's, an Irish pub in St. Louis where they found a way to mix their original material in between Irish folk songs. Eventually, enough originals accumulated and the urge to play louder led to getting the band back together, this time under the name Falling Fences. With the additions of new bass player John Hussung and drummer Joe Winze, they released their second full-length album, *Falling Fences II*.

4431 Lindell, 314-533-7662,  
stlcathedralconcerts.org

**Charlack Pub**  
8334 Lackland, 314-423-8119).

**Cicero's**  
6691 Delmar, 314-862-0009,  
ciceros-stl.com

**Club Viva**  
408 N. Euclid, 314-361-0322,  
clubvivastl.com

**The Crack Fox**  
1114 Olive, 314-621-6900  
crackfoxbar.com

**El Leñador**  
3124 Cherokee, 314-771-2222,  
lenador.com

**Ethical Society of St. Louis**  
9001 Clayton, 314-991-0955  
ethicalstl.org

**Fast Eddie's Bon Air**  
1530 E. Fourth, Alton, Ill.,  
618-462-5532,  
fasteddiesbonair.com

**The Firebird**  
2706 Olive, 314-535-0353  
firebirdstl.com.

**Foam**  
3359 S. Jefferson, 314-772-2100  
foamstl.com.

**The Focal Point**  
2720 Sutton, 314-560-2778  
thefocalpoint.org

**Fubar**  
3108 Locust, 314-289-9050,  
fubarstl.com

**The Gramophone**  
4243 Manchester, 314-531-5700  
thegramophonelive.com

**Hammerstone's**  
2028 S. Ninth, 314-773-5565  
hammerstones.net)

**Highway 61 Roadhouse & Bar** 34  
S. Old Orchard, 314-968-0061  
hwy61roadhouse.com

**Jazz at the Bistro**  
3536 Washington, 314-534-3663  
jazzstl.org

**Lemmons**  
5800 Gravois, 314-481-4812,  
myspace.com/lemmons

**Lemp Neighborhood Arts Center**  
3301 Lemp, 314-771-1096,  
lemp-arts.org

**The Loretto-Hilton Center for the Performing Arts**  
130 Edgar, 314-961-0644,  
opera-stl.org

**The Luminary Center for the Arts**  
4900 Reber, 314-807-5984,  
theluminaryarts.com

**McGurk's Irish Pub**  
1200 Russell, 314-776-8309,  
mcgurks.com  
*3/14-17 Kevin Buckley, Finn McGill, and Mick McAuley*  
*3/17 Falling Fences*  
*3/18 Irish Aires*  
*3/19 Falling Fences*  
*3/21 - 25 Cary Novotny, Maire Egan, and Dan Lowery*  
*3/26 Falling Fences*  
*3/28 - 4/1 Cary Novotny, Maire Egan, and Dan Lowery*  
*4/2 Falling Fences*

**Off Broadway**  
3509 Lemp, 314-773-3363  
offbroadwaystl.com

**The Pageant/Halo Bar**  
6161 Delmar, 314-726-6161  
thepageant.com

**Plush**  
3224 Locust, 314-535-2686  
plushstl.com

**Pop's Nightclub**  
401 Monsanto, Sauget, Ill.,  
618-274-6720,  
popsrocks.com  
*3/17 Bilmuri*  
*3/18 Skid Row & Buckcherry*  
*3/25 Road To Pointfest Session 1*  
*4/1 Road To Pointfest Session 2*  
*4/7 Scrub*  
*4/8 Road To Pointfest Session 3*  
*4/10 Blaze & ABK*  
*4/14 Road To Pointfest Session 4*  
*4/16 K Camp*  
*4/19 Cold*  
*4/21 Road To Pointfest Session 5*  
*4/22 Pop's Local Showcase*  
*4/23 Rittz*  
*4/30 Interpersonal Spring Fling Tour Homecoming*  
*5/12 Skid Roses - Tribute To Skid Row and guns and roses*  
*5/13 Bloodywood*

**Powell Hall**  
718 N. Grand, 314-533-2500,  
stlsymphony.org



## The Cold Stares Voices (2023)

*Filed Under: blues-rock*

Consumed by regret, loneliness, and desperation, Chris Tapp is a forlorn traveler on the rocky road of life, weary yet resilient, fierce yet vulnerable. On the electrifying *Voices*, the frontman for The Cold Stares constantly seems to be on the verge of a meltdown – if he never quite loses it, credit the cathartic power of his high-wattage performance. In the two-fisted tradition of such unruly groups as ZZ Top and The Black Keys, the veteran Indiana band – recently expanded to a trio, with bassist Bryce Klueh joining singer-guitarist Tapp and drummer Brian Mullins – makes blues-based music that can rock hard or pause for moments of reflection. While The Cold Stares’ dramatic gestures could easily be repurposed for arena-friendly uses, the lads explore more interesting avenues, be it the exciting interplay of guitar and percussion or an unexpected lyrical twist or the deceptively subtle textures of Tapp’s gutsy voice.

Tapp sees trouble wherever he looks, whether soul-searching or surveying the world around him. He opens *Voices* with the stomping epics “Nothing But the Blues” and “Come for Me,” which find him pleading to be rescued. In the Cream-inspired “Got No Right” and the slow-burning “Thinking About Leav-

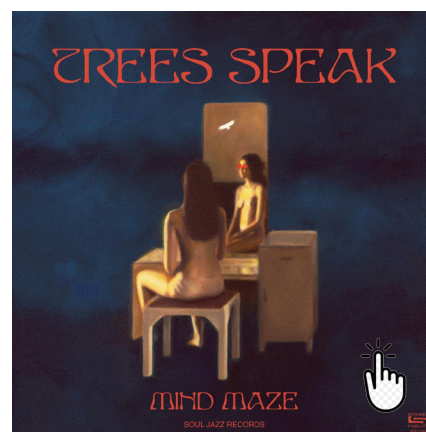
ing Again” Tapp struggles to break the chains of toxic relationships, only to relapse into dysfunction. While he often howls like a wounded beast, such naked angst can be deeply moving. Tapp’s singing on the melancholy ballad “Sorry I Was Late,” lamenting the death of a friend, is heart-rending.

Meanwhile, society threatens to collapse, from the funky “Lights Out,” depicting a “world gone astray” to the drug-addled protagonist of the driving “Sinnerman” to the pounding “It’s Heavy,” where he prophesies doom, exclaiming, “We’re running out of time.”

But Tapp has an answer to all the bad vibes: his guitar. The man clearly just loves to play, and the joy he takes in sharing that pleasure is exhilarating. Between his killer riffs and thrilling, yet wonderfully concise, solos, Tapp can scorch a song in a hurry.

Ultimately, of course, Tapp can’t escape difficult realities. *Voices* closes with the spooky acoustic tale “The Ghost,” in which he broods over a lost love, “hanging around until they put me in the dirt.” Like old-school blues artists before him, Tapp discovers comfort in simply sharing the hard times. Kindred spirits will understand.

## Trees Speak Mind Maze (2023)



*Filed Under: electronic, jazz, psychedelic rock*

*Trees Speak* is music as cosmological translation, borrowing from Can and Miles Davis’ Bitches Brew-era practice of studio-as-composition-tool, where lengthy improvisations coalesce into indelible flights of fancy with razor blade-assisted tape edits. *Trees Speak* operates between the subconscious and the unconscious, the radiant and the eclipse, the micro and the macro. As with all their previous releases, *Mind Maze* is a mind-boggling tightrope walk across an array of musical influences that seamlessly create the unique present-day world of *Trees Speak*. The band’s sound is characterized by a combination of German krautrock motoric-beat rhythms, angular New York post-punk attitude, ’60s spy soundtracks, psych, rock, jazz, and ’70s synthesizers and vocoders. There is also a cosmic spatial awareness to their sound; both personal inner space and galactic outer space, as well as a wilful pushing of sonic boundaries.

Here you will find the myriad sounds of 1970s German electronic music (everything from Can to Cluster, Popul Vuh to Tangerine Dream); 1980s New York post-punk and synthcore (from No Wave to Suicide); John Barry’s 1960s movies, John Carpenter’s 1970s horror. You will also hear the influences of French and Italian progressive rock (Magma, Goblin) as well as cosmic, new age and experimental space soundscapes ... an almost endless list of diverse influences that ebb and flow like an ocean of sound, in the process creating a truly unique soundscape that *Trees Speak* have made wholly their own. — boomkat.com



## Lichen Slow Rest Lurks (2023)

*Filed Under: indie-rock*

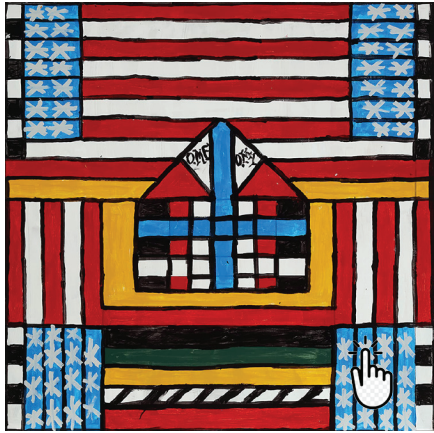
Creativity is not a solo pursuit; artists are always reinterpreting what’s come before in one form or another. But when creative paths come together, like they have in Arab Strap’s Malcolm Middleton and Joel Harries’ new project Lichen Slow, that space in between tends to offer something really interesting. *Rest Lurks* takes lead from the pair’s experienced musical backgrounds. Middleton peppers synonymously tongue-in-cheek humour across the album while Harries graces it with airy soundscapes à la his stripped-back solo material. Star track *Hobbies* poignantly blends these styles together. Middleton’s melancholically sparse verses draw you near before Harries lifts the lid on the darkness with contrastingly celestial vocals tackling struggles with mental health and depression in the process.

Imposter Syndrome continues with lyrically topical themes alongside jagged, distorted guitars. *Pick Over the Bones* is imbued with a sense of anxiety through frantic drum patterns, while *Garden Gate* closes the album with a teary, blissful ambience. Connecting all of the dots between the 12 tracks however is the sense of openly creative expression that Middleton and Harries have evidently embraced in their new project. *Lichen Slow* is the space between Middleton and Harries’ creative paths and their debut is rich in colour and character.

## Lonnie Holley Oh Me Oh My (2023)

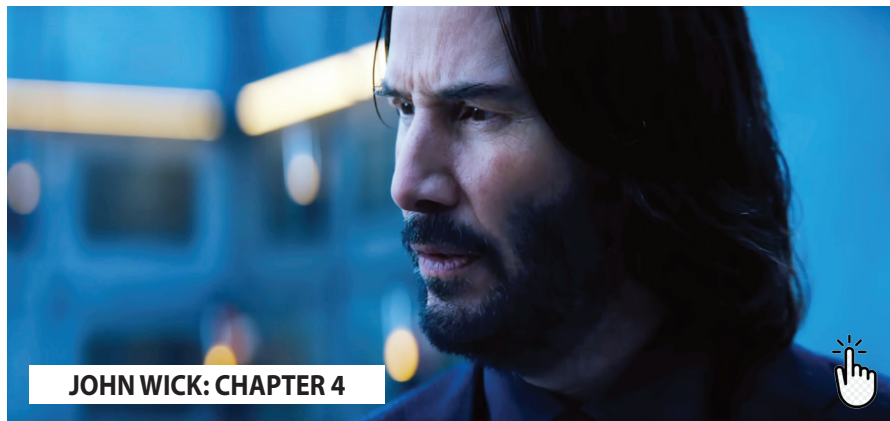
*Filed Under: experimental*

# FILM



Visual artist and musician Lonnie Holley worked with star producer Jacknife Lee on the studio effort *Oh Me Oh My*, honing Holley's free-wheeling narratives and recollections into concise yet atmospheric songs. His poetic lyrics address earthly struggles while pondering our place in the universe, generally expressing messages of hope and encouragement. Several of the tracks on *Oh Me Oh My* take the form of ambient lullabies and meditations. "Testing" opens the release with drifting pianos, trickling synths, and Holley's rich, bellowing voice. Michael Stipe guests on the album's calm, ethereal title track, with sparse piano and upright bass underpinning Holley's lyrics about learning to be more understanding and growing more appreciative of the gift of life.

"None of Us Have But a Little While" is a simple but resonant reflection on mortality, backed by Sharon Van Etten's soaring vocals. Other tracks are more urgent, continuing in the funk-influenced direction of *Broken Mirror: A Selfie Reflection* (Holley's 2021 collaboration with Matthew E. White). "I Am a Part of the Wonder," one of two tracks featuring Moor Mother, has a shuffling Afrobeat rhythm, shimmering kalimbas, and spaced-out trumpets. Some of the album's most gripping moments directly draw from Holley's storied past. "Mount Meigs" addresses his time at the Alabama Industrial School for Negro Children, where he was forced into hard labor and subject to unspeakable physical abuse. A torrent of painful memories rushes out, carried by racing, rollercoaster-like drums and a dense, dizzying fog of horns, strings, and abrasive guitars.



JOHN WICK: CHAPTER 4



SHAZAM! FURY OF THE GODS

## Shazam! Fury of the Gods March 17, 2023 | PG-13

*Shazam! Fury of the Gods* continues the story of teenage Billy Batson (Asher Angel) who, upon reciting the magic word "SHAZAM!," is transformed into his adult Super Hero alter ego, Shazam (Zachary Levi).

## All the World Is Sleeping March 17, 2023 | Not Rated

Fighting for her own life and the ones she loves, a mother (Melissa Barerra) in New Mexico sinks deeper in her addiction while struggling to surface for her daughter.

## Country Gold March 17, 2023 | Not Rated

George Jones invites an up and coming country music superstar out on the town in Nashville the night before George is to be cryogenically frozen in 1994.

## Full River Red March 17, 2023 | Not Rated

12th century China, during the Song Dynasty, set against a brewing rebellion by the Jin people against the Imperial Court. Two hours before a crucial diplomatic meeting between the Song Prime Minister Qin Hui and a high level Jin

delegation, the Jin Ambassador is murdered. An important letter destined for the Emperor is stolen from him. As the search for the letter unfolds, alliances are formed, secrets are revealed, and no one can stop the truth that is destined to leave its mark in history.

## The Innocent March 17, 2023 | Not Rated

When Abel learns that his mother is about to marry a man in prison, he freaks out. With the help of his best friend, he will do whatever it takes to protect her. But meeting his new stepfather may well offer him a new perspective.

## Inside March 17, 2023 | R

Nemo (Willem Dafoe), an art thief, is trapped in a New York penthouse after his heist doesn't go as planned. Locked inside with nothing but priceless works of art, he must use all his cunning and invention to survive.

## Moving On March 17, 2023

Two estranged friends, Claire (Jane Fonda) and Evelyn (Lily Tomlin), reunite to seek revenge on the petulant widower

(Malcolm McDowell) of their recently deceased best friend. Along the way, Claire reconnects with her great love (Richard Roundtree) as each woman learns to make peace with the past and each other.

## Rodeo March 17, 2023 | Not Rated

Hot-tempered and fiercely independent, Julia (Julie Ledru) is a gearhead who thrives in hostile environments and turns every situation to her advantage. She has a talent for scamming condescending men who think it's cute that she shows interest in their used motorbikes—and can't fathom her riding away with gleeful abandon. Her obsession with the high-octane world of urban 'Rodeos' – illicit gatherings where riders show off their bikes and latest daring stunts – sparks a chance meeting with a volatile clique. Julia strives to prove herself to the ultra-masculine gang by performing cons and running errands for their incarcerated ring leader, Dom. She finds a surprising connection with Dom's wife, Ophélie (Antonia Buresi) and son, a risky move that puts a target on her back. Julia is unsure who she can trust as the ultimate heist comes down the pike..

## John Wick: Chapter 4 March 24, 2023 | R

John Wick (Keanu Reeves) uncovers a path to defeating The High Table. But before he can earn his freedom, Wick must face off against a new enemy with powerful alliances across the globe and forces that turn old friends into foes.

## The Five Devils March 24, 2023 | Not Rated

Vicky (Sally Dramé), a strange and solitary little girl, has a magical gift: she can reproduce any scent she likes, and collects them in a series of carefully labelled jars. She has secretly captured the scent of Joanne (Adèle Exarchopoulos), her mother for whom she nurtures a wild, excessive love. When her father's sister Julia (Swala Emati) bursts into their life, Vicky reproduces her smell and is transported into dark and archaic memories which lead her to uncover the secrets of her village, her family and her own existence.

## The Lost King

**PLACING A CLASSIFIED AD IS EASY!**

20 words \$10, each additional word .25 cents  
 Get more bang for your buck! Eail your ad to us  
 at classifieds@stlpublicnews.com or call us at 314-  
 665-0221

# CLASSIFIED ADS

**March 24, 2023 | PG-13**

In this inspiring true story, amateur historian Philippa Langley (Sally Hawkins) believes she has made the archeological find of the century: the lost burial site of King Richard III. She takes on Britain's most eminent historians, forcing them to rethink the legacy of one of the most controversial rulers in English history.

**The Tutor  
 March 24, 2023 | R**

An in-demand tutor (Garrett Hedlund) is assigned to instruct a billionaire's son (Noah Schnapp) from their New York waterfront estate. But what should be a straightforward job is complicated by the student's disturbing obsession with him, threatening to expose his darkest secrets.

**APARTMENTS FOR RENT**

**Crestwood**  
 2bdrm, 1bath refurbished, 925/sqft, c/a and h, no pets. \$1050/mo text 314-334-3900  
**Hazelwood**  
 2bdrm, 1.5bath refurbished, 950/sqft, c/a and h, no pets. \$1075/mo text 314-334-3900  
**Kirkwood**  
 Downtown location Studio 1br, 1bath, 450/sqft c/a and h, pets ok \$650/mo text 314-334-3900

**HOMES FOR RENT**

**HOMES FOR SALE**

**COMMERCIAL PROPERTY**

**LAND FOR SALE**

**HELP WANTED**

**Green Dining Alliance Program Intern**  
 The GDA Program Intern's primary focus will be to support GDA audits and outreach to new restaurants. Additional initiatives include working with the GDA Manager to communicate updates, restaurant news and events, sustainability news, and general information about the GDA in print or social media. Opportunities exist to focus on projects specific to the Intern's unique skill set and interests. The candidate should be

prepared to work independently with support from the GDA Program Manager. This is a part-time, unpaid internship.  
 Apply at: 4125 Humphrey St, St. Louis, MO 63116  
 314-282-7533  
 info@earthday-365.org

**Communications and Marketing Manager**  
 The Communications & Marketing Manager is responsible for enhancing earthday365's brand presence in the community through marketing and promotion, with the opportunity to manage high-impact regional messaging campaigns on key environmental issues. The primary focus of this role will be to manage the development of all communication and marketing materials that support earthday365's programs, events, and fundraising efforts. The position is full-time, salaried (\$40,000), and offers a full suite of benefits. Position is open until filled.  
 Apply at: 4125 Humphrey St, St. Louis, MO 63116  
 314-282-7533  
 info@earthday-365.org

**ROG Recycling Ambassador**  
 Want to jumpstart a career in sustainability or the environmental movement? earthday365 is hiring seasonal, part-time, paid (\$15/hour) Recycling Ambassadors for our Recycling On the Go program. Position includes opportunities for outreach booth educational engagement as well as event composting and recycling at outdoor events and festivals. Please apply at 4125 Humphrey St, St. Louis, MO 63116  
 314-282-7533  
 info@earthday-365.org

**QT Quik Trip - all locations**  
 Hiring for full staff and management positions apply online at <https://qtihap.quiktrip.com/> Internet/

**AUTOS FOR SALE**

**TRUCKS FOR SALE**

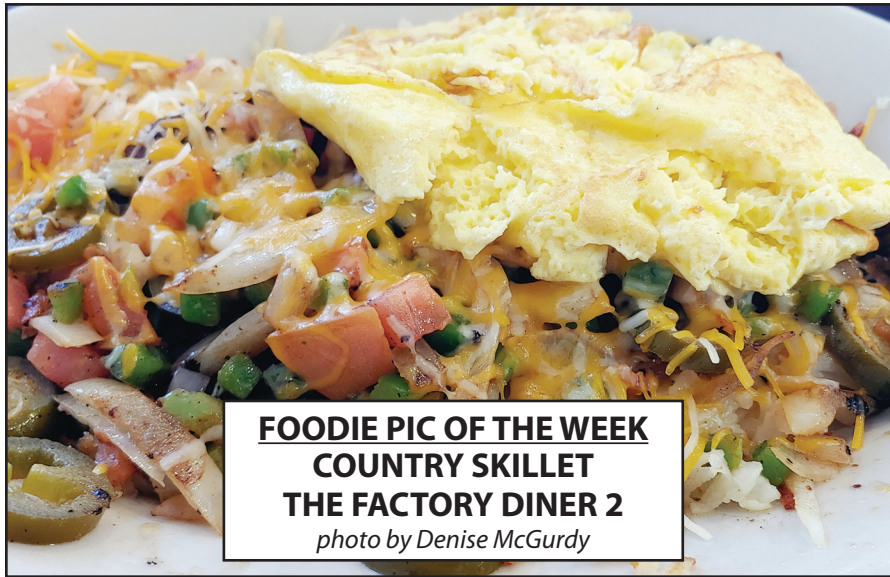
## UNCLE ALBERT

### WHAT SINGLE MOMS DON'T UNDERSTAND ABOUT DATING

Uncle Albert,  
 I've been reading your column and am also one of those single mom's that you seem to hate, Why is it that you think we should not be in the dating market for a good man? I'm 42, look sexy, am desirable and I need some help. What man would not want a woman like me? Who hurt you anyway?

*Let me answer all of your questions. A man that has options will pass on you because you have a lot of baggage. Not that I am saying that your kids are baggage, but the attitude that come with being a single mother. Any man that takes you on will be expected to pay for your kids and have zero authority. That's a raw deal for any man. There is also the aspect of the 'other man', the baby daddy. The kids rejecting your new man's authority because 'you are not my father'. Any rule they lay down on YOUR KIDS gets squashed by you... again because he lacks the authority. This is not the prize that men want. Men want a woman who is fit, friendly, feminine, fertile and faithful. A woman that he can build a family with, not one already assembled. No man wants to spend his own hard earned resources raising another man's spawn. A good man wants to use his resources on his own biological kids and build his own legacy.*

*I suggest that you lay off the dating until your kids are grown and out of the house. Then, maybe, just maybe, there might be a good man or two out there for you. Just remember, men's sexual marketplace value is on the incline while yours is on the decline. In other words, he has options. And for the record, I do not hate women. I love women. I'm married to one. But I hate what feminism has done to modern women. Feminism has told women that they can have the authority of a man without the accountability. This is what I dislike. Feminism has ruined families and society. I'm just trying to turn that tide. As for you, all I can do is wish you good luck. And for the record, no one hurt me. I just became more aware of the undeniable truth of female nature.*



**FOODIE PIC OF THE WEEK**  
**COUNTRY SKILLET**  
**THE FACTORY DINER 2**  
 photo by Denise McGurdy

**Your Boxed and Highlighted Ad Here For Only \$30/issue**

**RFB**  
*Presents*  
**COFFEE WITH JESUS**  
**Know the Material**

You probably never had sermon notes, Jesus. Probably never wrote an outline, had a prepared text or a three-point message.

Freestyle was more my thing, Joe. Helps when you know the material.

Man, I wish I could be more like you, Jesus!

That's the goal, Joe.

**Affordable**

# pet INSURANCE

Pets are family – they fill our days with love and joy.

No one ever wants to imagine their pet sick or injured. But with Physicians Mutual pet insurance, you can help keep your pet healthy and happy.



Go to any vet



100%  
reimbursement on  
vet bills available



No lifetime limit  
on benefits



Help protect your pet and pocketbook

**1-844-334-8240**

[InsureBarkMeow.com/public](https://InsureBarkMeow.com/public)



Physicians Mutual Insurance Company

For complete details, including costs and limitations, please contact us. Product not available in all states.

6294